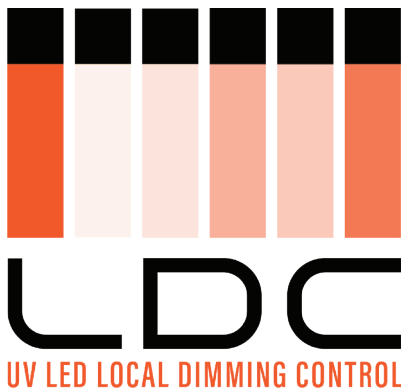


MUTOH
MAKES IT POSSIBLE

FLATBED UV-LED PRINTER

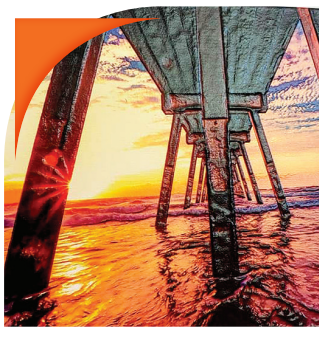
XpertJet 661 UF



The XpertJet 661UF, UV-LED flatbed printer offers many new features including a new sleek modern design, larger printable surface area, updated touchscreen panel, improved LED lamp and more. These enhancements along with the improved ease of use and easier maintenance will increase both productivity and profitability. The Mutoh XPJ-661UF allows for layered printing to create fine textured prints and braille, all of which will instantly add value to any print. Tie that in with Mutoh's "Local Dimming Control Technology", you now have the ability to add high glossy finishes easily in one pass! The Mutoh XPJ-661UF is a great addition to your arsenal and will definitely add profits to your business!



GLOSSY & MATTE VARNISH



RICH TEXTURES



VARIABLE PRINTING



BRAILLE

MUTOH
MAKES IT POSSIBLE

LDC
UV LED LOCAL DIMMING CONTROL

UV-LED Lamp
Local Dimming
Control Technology

Upgraded LED
Touch Panel

Variable Data
Printing

Density Test
Pattern

1-800-99MUTOH

www.MUTOH.com

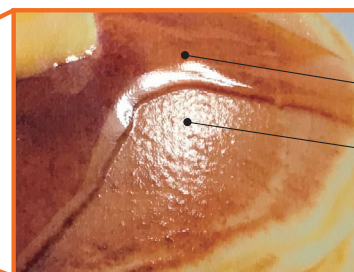
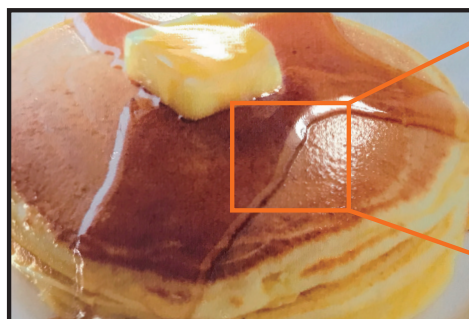


Mutoh's Unique UV-LED Lamp Local Dimming Control Technology

The LED-UV lamp local dimming control* technology produces various rich texture expression. It provides glossy, semi-glossy, and matte varnish printing simultaneously with colors and/or white printing with a single table movement.

*local dimming=segment control

UV-LED Lamp Local Dimming Control Technology



Glossy Varnish

Matte Varnish

Even if varnish is simultaneously printed with colors and/or white with single table movement, glossy and matte varnish can be expressed.

NEW UV-LED LAMP + UV-LED Lamp Local Dimming Control Technology

Mounted from XPJ Series

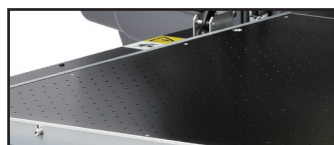
Shortens printing time and improves productivity. Reduces grain, banding and layer printing misalignment.

Newly Designed Mechanism Ensures Excellent User Experience

TABLE MECHANISM FOR USER FRIENDLINESS



Automatic table height control from 0"-5.90".



Five vacuum power control settings.

OPTIONAL ITEM



ROTARY UNIT
Enables printing on cylindrical objects.

LED Touch Panel

LED touch panel provides high quality display and improves panel operation.

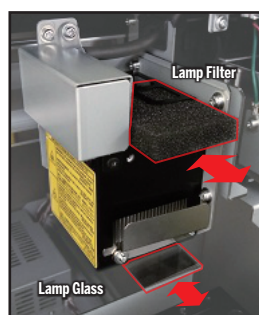
Print Resume Function

Ability to pause and resume print function.

Partial Nozzle Block Activation

Printing can be performed temporarily using only active nozzle blocks if nozzles are clogged.

Improved Maintenance



Redesigned area around UV-LED Lamp makes for easier access for maintenance.

New removable/replaceable UV lamp filter makes for easier cleaning.

Enhanced Applications

VARIABLE DATA PRINTING

Allows data | text to be changed from one printed piece to the next without stopping the printing process. Example: Name Badges.

DENSITY TEST PATTERN

Varnish: Easily print matte and glossy varnish by selecting a certain density from the test patterns.

White: Reduced microstructure (mottling) by optimizing ink density.

XPJET 661UF SPECIFICATIONS

Printing Systems		On-demand piezo drive system	Print Resolution	1440 / 1080 / 720 dpi (Total 3 modes)
Set Media	Size (WxD)	19.02 in x 23.39 in	Interface	Ethernet (10BASE-T / 100 BASE-TX)
	Height	0-5.91 in	Power Requirements	AC 100-120V± 10%, 50/60Hz ± 1Hz
	Weight	13.23 lbs.	Operation Noise	Standby: 49dB or less Printing with vacuum table: 69dB or less
Max Printable Size (WxD)		19.02 in x 23.39 in	Printable Environment	Temperature: 68-89.6°F Humidity: 40-60%RH (non condensing)
Height Adjustment		Automatic	Power Consumption	Sleep Mode: 20W or less Ready to Print: 40W or less Operation: 300W or less
Ink	Type	UV-LED Ink (UH21 ink / US 11 ink)	Dimensions (WxDxH) Weight	46.77 in x 64.06 in x 23.78 in (cover closed) weight: 286.60 lbs.
	Ink Set	4 colors (C, M, Y, K) 6 colors (C, M, Y, K, White, Varnish)	Printer Driver	Bundled
	Capacity	220ml ink cartridge (CMYK, White, Varnish)		
	No. of slots	6	RIP Software	SAI FlexiSIGN & PRINT MUTOH Edition
Stand		Included Working Height: 48.11 in	Rotary Unit	Optional