

# FLATBED UV-LED PRINTER

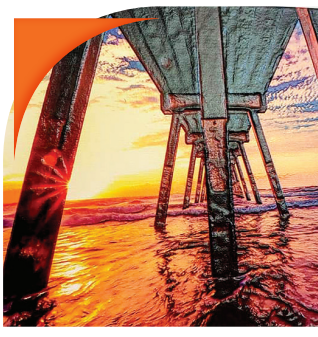
# *XpertJet* 461 UF



The **XpertJet 461UF**, compact UV-LED flatbed printer offers many new features including a new sleek modern design, larger printable surface area, a larger window for safe viewing, an updated touch-screen panel, an improved LED lamp, optional vacuum table providing the ability for increased printing depth and more. These enhancements along with the improved ease of use and easier maintenance will increase both productivity and profitability. The Mutoh XPJ-461UF allows for finer texture layers which instantly adds value to any print. Tie that in with Mutoh's "Local Dimming Control Technology", you now have the ability to add high glossy finishes easily in one pass! The Mutoh XPJ-461UF is a great addition to your arsenal and will definitely add profits to your business!



**GLOSSY & MATTE VARNISH**



**RICH TEXTURES**



**VARIABLE PRINTING**



**BRAILLE**

**MUTOH**  
MAKES IT POSSIBLE

**LDC**  
UV LED LOCAL DIMMING CONTROL

UV-LED Lamp  
Local Dimming  
Control Technology

Upgraded LED  
Touch Panel

Optional  
Vacuum Table

Removable Table

Expanded  
Opening Space

1-800-99MUTOH

www.MUTOH.com

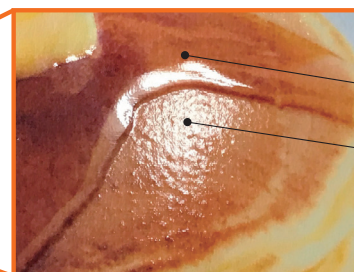
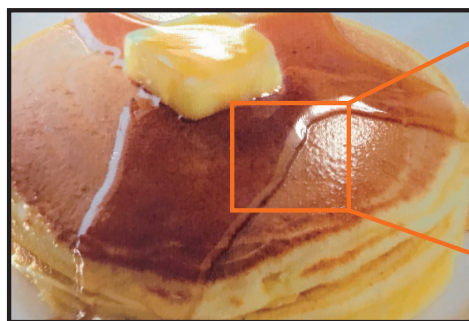


## Mutoh's Unique UV-LED Lamp Local Dimming Control Technology

The UV-LED local dimming control\* technology produces various rich texture expression. It provides glossy, semi-glossy, and matte varnish printing simultaneously with colors and/or white printing with a single table movement.

\*local dimming=segment control

### UV-LED Lamp Local Dimming Control Technology



Glossy Varnish

Matte Varnish

Even if varnish is simultaneously printed with colors and/or white with single table movement, glossy and matte varnish can be expressed.

## NEW UV-LED LAMP + UV-LED Lamp Local Dimming Control Technology

Mounted from XPJ Series

Shortens printing time and improves productivity. Reduces grain, banding and layer printing misalignment.

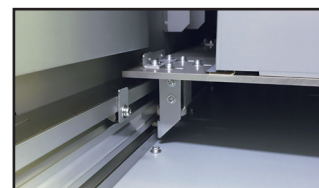
## Newly Designed Mechanism Ensures Excellent User Experience

### TABLE MECHANISM FOR USER FRIENDLINESS



Print onto objects up to 2.76" thick. Table removal allows printing onto objects up to 5.91" thick. Optional vacuum table available.

### PRECISE RAIL MECHANISM



High precision rails on both sides keep the table horizontal and provide consistent print quality.

### LED Touch Panel

LED touch panel provides high quality display and improves panel operation.

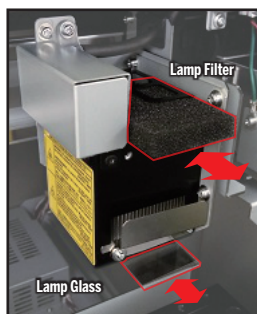
### Print Resume Function

Ability to pause and resume print function.

### Partial Nozzle Block Activation

Printing can be performed temporarily using only active nozzle blocks if nozzles are clogged.

## Improved Maintenance



Redesigned area around UV-LED Lamp makes for easier access for maintenance.

New removable/replaceable UV lamp filter makes for easier cleaning.

### EXPANDED OPENING SPACE



Newly designed front cover with hydraulic damper ensures safety and improves ease of operation. Expanded opening space for ease of use and maintenance.

## XPJET 461UF SPECIFICATIONS

Printing Systems		On-demand piezo drive system		Print Resolution	1440 / 1080 / 720 dpi (Total 3 modes)	
Set Media	Size (WxD)	19.02 in x 12.95 in		Interface	Ethernet (10BASE-T / 100 BASE-TX)	
	Height	up to 2.76 in (with standard table)   up to 5.9 in (w/o standard table)		Power Requirements	AC 100-120V± 10%, 50/60Hz ± 1Hz	
		up to 2.76 in (with optional vacuum table)		Operation Noise	Standby: 51dB or less   Printing with standard table: 63dB or less	
	Weight	up to 11.02 lbs. (w/standard table)   up to 17.64 lbs. (w/o standard table)			Printing with optional vacuum table: 70dB or less	
up to 8.82 lbs. (with optional vacuum table)			Printable Environment	Temperature: 68-89.6 °F   Humidity: 40-60%RH (non condensing)		
Max Printable Size (WxD)		19.02 in x 12.95 in		Power Consumption	Sleep Mode: 20W or less   Ready to Print: 40W or less   Operation: 195W or less	
Height Adjustment		PG handle (handle 0.059 in / round)		Dimensions (WxDxH)   Weight	46.77 in x 38.27 in x 23.50 in (cover closed)   weight: 209.44 lbs.	
Ink	Type	UV-LED Ink (UH21 ink / US 11 ink)			46.77 in x 38.27 in x 39.80 in (front cover opened)	
	Ink Set	4 colors (C, M, Y, K)   6 colors (C, M, Y, K, White, Varnish)			46.77x 40.35x 23.50 in (PG handle cover opened)	
	Capacity	220ml ink cartridge (CMYK, White, Varnish)		Printer Driver	Bundled	
	No. of slots	6		RIP Software	SAi FlexiSIGN & PRINT MUTOH Edition	
Vacuum Table		Optional				