



iColorTM 500 Application Guide

Table of Contents

Topic	Page #
Index	1
General Information: Setup, Media, Applications.	
Setup Notes: Driver installation	2
Overview and Support Information: How to get Help	3
Application Guide: Media Type Settings, Etc	4
Instructions for Specific Laser Transfer Papers	
UniNet Premium Paper Instructions: Two-Pass Printing	5 - 6
UniNet Premium Paper: TransferRIP Instructions	7
iColor Standard 2-Step Transfer Paper Instructions: Two-Pass Printing	8 - 9
iColor Standard 2-Step Transfer Paper: TransferRIP Instructions	10
EnduraTRANS 1-Step Paper Instructions: Two-Pass and TransferRIP	11
Using UniNet Premium Paper for Pastel Colors on White Apparel	12
EnduraTRANS HS2 Paper for Hard Surfaces	13



iColor 500

SIGNWarehouse

Application Guide

UniNet iColor 500: Setup Notes

After unpacking the printer, Plug it in, but Do Not Turn it On.

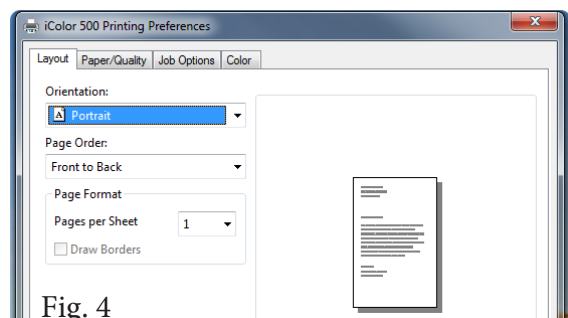
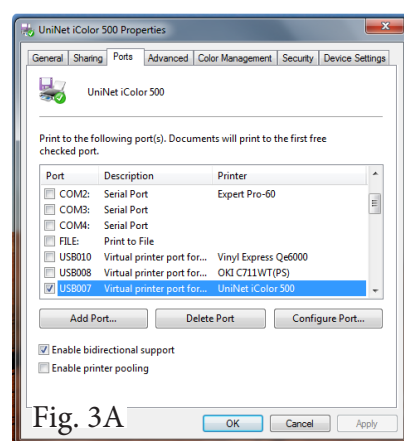
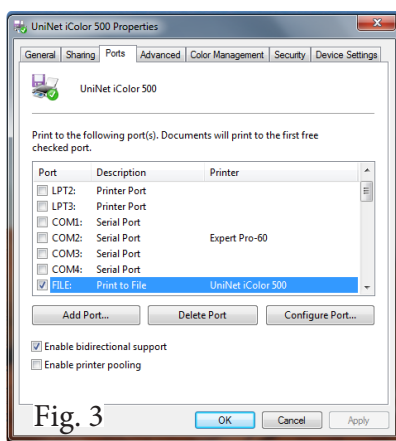
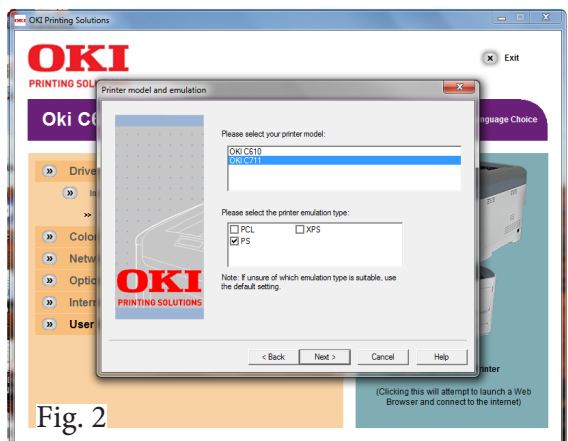
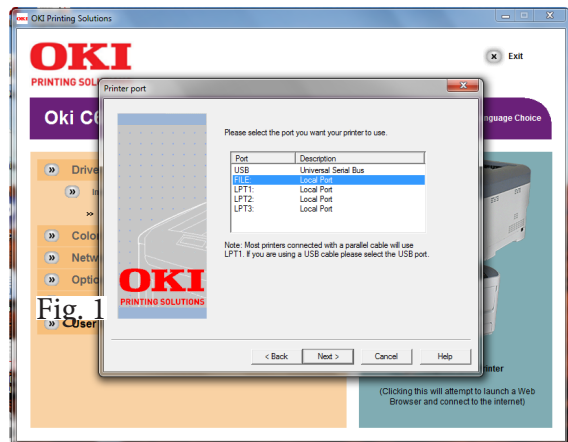
Begin installing the software from the enclosed installation disc.

Note. When prompted to select a port for the printer, if you are installing in Windows 7, Do NOT choose USB. Choose File. (Fig 1). If you choose USB, the driver installation may stall or may be completed without all the driver's essential functions.

Then, select OKI 711 (PS) from the list of drivers (Fig. 2). Next is the Customization Screen, where you will have the opportunity to rename the printer. It may be helpful to rename it iColor 500 or UniNet.

Once the installation is complete, connect the printer's USB cable to your PC and allow Windows to detect the printer. Then click the Start button, select OKI 711 PS from your Devices and Printers menu and right click "Printer Properties". From the Printer Properties tab, select Change Port. Then change the port setting from File to an available USB port in (Fig. 3, 3A). That port will be assigned to the OKI 711 (ps) or whatever custom name you assigned to your printer.

To test the new port connection, click Print Test Page. If the printer responds, your installation is complete and you are now ready to use the printer. If not, change the USB port setting and repeat the process until you have a completed test page.



Printer driver settings.

If your printer driver is installed properly, you will be able to open the Printer Preferences window with four tabs:

Layout, Paper/Quality, Job Options, and Color (Fig 4). If you do not see all four tabs, your driver has not been completely installed. To correct this, remove the printer from the Devices and Printers window, and reinstall the driver using the File setting as directed above. Or **Click Here to download the updated driver** from our Support Blog. NOTE: It is always preferable to change the Printer Properties from the Windows Devices and Printers folder. In some graphics applications, these settings override those selected in the application. Change them here first, then make sure the settings in your graphic design application match the ones in the Devices and Printers folder.

The technical specifications and performance capabilities listed herein are subject to change at any time and may not reflect actual production capabilities. SignWarehouse is not responsible for any incorrect information contained herein and urges any buyer or potential buyer to test the product prior to making a purchase.

SignWarehouse Inc • 2614 Texoma Drive Denison TX 75020 • 980 Contract Street, Suite 110 Lexington, KY 40505, USA Phone: 800-899-56655, Email: Sales@signwarehouse.com.

Tech Support: Phone 800-966-1783. Email: support@signwarehouse.com. The iColor 500 is available in the USA through an exclusive distribution partnership between SignWarehouse Inc. and UniNet. For information about international sales of iColor laser printers, contact UniNet at 631-590-1040 ext 203. UniNet and iColor are registered trademarks of UI Supplies, Inc.



iColorTM 500 Application Guide

Overview: Heat Transfer Options, Support and Warranty Info

Applications: The UniNet iColor 500 is a very versatile printer. Through the use of the various self-weeding laser transfer papers and its Fluorescent White toner option, the iColor 500 can be used to create lots of different products. These include soft, durable T-shirt transfers on white, black and colored garments, durable transfers on other textile items like canvas bags, and mouse pads, and non-textile items like sealed wood signs and magnetic vinyl. By using the iColor 500's unique CMYK + Fluorescent White toner setup, you can also print directly to non-standard media like black or colored cards stock to create decorative posters, flyers, invitations and the like.

All of these exciting applications depend on a combination of the iColor's toner set, a particular form of paper, and a type of print-receptive or heat transfer-receptive surface. This Application Guide will introduce you to these various print possibilities and show you the basic steps and processes. With a little patience and practice, you'll soon master the impressive range of fun and profitable applications for the versatile iColor 500.

Technical Support: If at any time you find yourself in need of expert technical assistance, please contact SignWarehouse Technical Support. Assistance is available six days a week, by phone, e-mail. Your iColor 500 purchase includes a 90 Day PSP or Priority Support Plan that provides priority, toll-free telephone support, installation and setup assistance, and remote desktop support. After the 90 Day PSP period, you are still entitled to free e-mail technical support via support@signwarehouse.com. We are committed to providing the assistance you need to succeed.

SignWarehouse Technical support:

Toll free phone support: 1-800-966-1783

Phone support hours: Monday - Friday, 7am - 7pm. Saturday 9am - 4pm, CDT

E-mail support: support@signwarehouse.com

iColor Warranty: Your UniNet iColor 500 is covered by a 90 Day Limited Warranty. To receive a free upgrade to a full one Year Limited Warranty, register your printer online at <http://www.icolorprint.com/warranty>.

Upgraded warranty includes:

- 12 months of Parts and Labor Coverage
- Global Service and Support from SignWarehouse and UniNet

To qualify for the One Year Limited Warranty, you must register your eligible UniNet iColor device within 14 days of purchase. Registering allows UniNet to keep you informed of firmware and driver updates, product enhancements, new developments, and new releases.

iColor™ 500 Application Guide

iColor 500-compatible Transfer Paper & Settings

Product Name	Product Description/Application	Media Type Setting
UniNet Premium Paper	Weedless two - step paper for light and dark apparel	Medium Light
iColor Standard 2-Step Transfer Paper	Weedless two - step film and paper for light and dark apparel	Film or Transparency
Forever Laser Dark (No-Cut) Low Temp	Weedless two - step film and paper for light and dark apparel	Film or Transparency
EnduraTrans 1-Step	Weedless one-step paper for white and light apparel	Ultra Heavy 1
EnduraTrans HS2	Weedless one-step paper for hard surfaces	Labels
Forever Multi-Trans	Weedless one-step paper for hard surfaces	Label 2

UniNet iColor 500 LED Laser Transfer Printer: Loading Paper

In order to take full advantage of the iColor 500's versatility, a few things should be considered. Note that all transfer paper varieties should be printed using the correct Media Type Settings.

To begin printing, **open the Multi Purpose tray** or on the front of the printer (Fig 1). All media printed from the Multi-Purpose Tray should be loaded print side up (Standard office documents printed from the bottom tray -Tray 1- should be loaded print side down).

Press the blue tab on the right side of the tray to pop the transfer paper up into the printing position. If paper is loaded in the Multi-Purpose Tray but the tray is not raised, the printer will not sense the paper and will default to printing from the bottom tray.



Fig. 1

Media Feed Tips

All Heat Transfer Papers must be fed into the printer from the Mutli-purpose Tray. These specialty papers require a straight paper path in order to achieve proper fusing temperatures between the toner and paper. Loading laser transfer paper in the bottom tray may result in poor transfer performance, paper jams, and/or damage to the fuser assembly.

Media Check: Some papers, such as Forever Laser Dark (No-Cut) or iColor Standard 2-Step transparent film, are difficult for the printer's paper sensor to read and feed. To alleviate problems with edge detection, open the printer driver, Click Printer Preferences, and click the Paper Quality tab. Click the Advanced button to open the Advanced Options window. The Printer Features menu at the bottom has a Media Check option. Set this to Off (Fig 3). This will allow the printer to begin feeding paper from the Multi-Purpose tray without pausing to scan for the front edge of the paper or film.

Registration: If you find that your CMYK layer and white layers are not registering correctly, place a stack of paper under the top sheet in the Multi-Purpose tray so that the feed path of the paper from the tray is as straight as possible (Fig 2).



Fig. 2

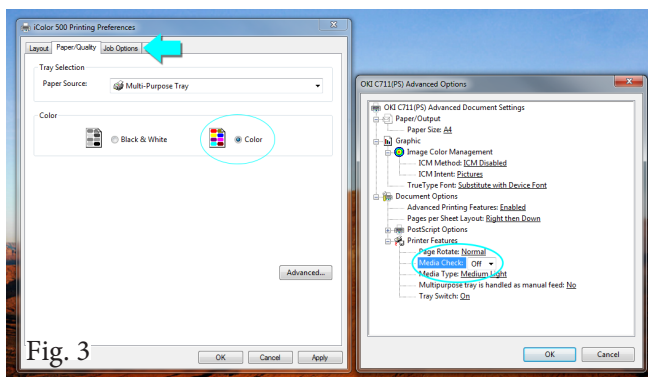


Fig. 3



iColor™ 500 Application Guide

Uninet Premium Two-Step Transfer Paper for Dark Apparel

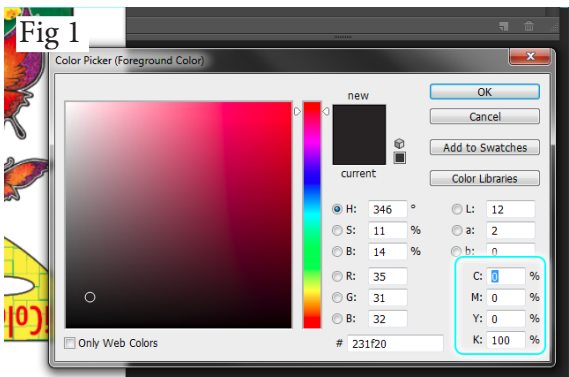
Two-Pass Printing instructions for use without TransferRIP:

For instructions for use with TransferRIP, please see page 6.

Click to Watch Video demonstration from our iColor Webinar!

UniNet Premium paper is a high performance two step self-weeding solution developed specifically for the UniNet iColor laser printers. This exceptional paper maximizes the benefit of the iColor white toner printers to produce superior opacity and washfastness for apparel and superior image quality and flexibility on non-apparel applications.

The primary application is decoration of colored and dark garments. UniNet Premium Paper can also be used with white toner printers to produce transfers on white apparel and mouse pads with very light pastels and white-to-color gradients that are not supported by one-step self-weeding papers. You'll find more information about these applications on page 9 of this Setup App Guide.



Directions

1) For full color images with white under-base, design image in two layers. The top layer will be printed using the CMYK toner cartridges. The bottom layer will be printed with white toner only.

2) **Software Settings:** Make sure image mode in your design software is set to CMYK. Convert the under-base to a solid layer and set fill color to a CMYK value of 0/0/0/100 (100% Black)(Fig 1).

3) Load Transfer paper, smooth side up, in the UniNet iColor 500 multi-purpose tray. You can load and print multiple sheets.

4) **Printer Settings-CMYK layer:**

- Open Windows Devices and Printers window and Right-click the iColor 500* Printer icon. Select Printer Preferences. Click the Paper/Quality Tab. Set the Paper Source as Multi-Purpose Tray, and click the Color radio button.

- Click the Advanced button. In the Advanced Options window, set the Paper Size to A4 and the Media Type to Medium Light.

- Click the Job Options tab, click the Advanced button and click the Mirror Print check box.

- Click the Color Tab and click the Office Color button. Next to this, click the Details button. In the Office Color Details window, click the Matte-K toner radio button at the bottom of the window (Fig 2).

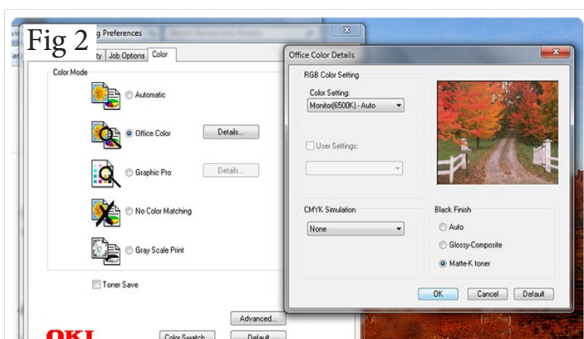
5) Print the CMYK layer from your graphic design software

6) Re-load the Transfer Sheets in the multi-purpose tray smooth side up. The printed CMYK layer will be facing upwards.

7) Open iColor 500 printer and remove the Black toner & drum (Fig 3). Insert White toner & drum cartridge, close printer.

8) Select the underbase layer in your design software. It should be a solid layer of 100% Black. This will be interpreted by the printer driver as the white layer and will be printed with white toner only.

Continued on page 5



Ordering info

Part Number	Description
PRNA-UN-ICHTM-25	8.27" X 11.7" sheets of Transfer & Adhesive Paper, Qty 25 each

iColorTM 500 Application Guide

Uninet Premium Transfer Paper for Dark Apparel: Cont'd

Two-Pass Printing instructions for use without TransferRIP:

For instructions for use with TransferRIP, please see page 6.



Directions, Cont'd.

TIP! To create color transfers with no visible white outline, reduce the size of the bottom layer by about 3 pixels or 0.125".

9) **Printer Settings-White layer:**

Open Windows Devices and Printers window and Right-click the iColor 500* Printer icon. Select Printer Preferences. Click the Paper/Quality Tab. Change the Color Setting from Color to Black & White. All other settings will remain the same.

10) Send the print command. The iColor 500 will add the white layer on top of the CMYK layer

11) Set heat press to 240 - 280°F, 40 seconds, medium - firm pressure.

- Cover the press table with a lower platen wrap and cover that with a Teflon sheet over the press table. Or cover the table with a Teflon cover. This is very important. If the press table is not covered, too much heat will escape into the rubber base and the first step of the transfer will not be completed properly.

- Place the transfer sheet face up on the press table and cover it with an adhesive sheet. The smooth bright side of the adhesive sheet should be face down, on contact with the printed side of the transfer sheet. **TIP!** Fold one corner of the adhesive sheet under. This will make it easier to separate them after pressing. Cover both with a sheet of copy paper.

12) Press for 40 seconds. Raise the press heat platen and immediately close it and repress for 35 seconds.

13) Raise the press - not too abruptly - and immediately remove the copy paper, grab the corner of the adhesive sheet and peel it back from the transfer sheet in one smooth motion (Fig 7). **TIP!** The transfer sheet should be kept flat on the press table to keep it from cooling. Wearing a pair of clean cotton gloves will enable you to peel more quickly.

14) Trim the edges of the Transfer sheet with scissors to remove any residue from the edges of the adhesive sheet .

15) Place the Transfer sheet printed side down on the garment.

16) Increase the heat press pressure setting to firm and press for 35 seconds at 240 - 260°F.

17) Allow the transfer to cool to room temperature before removing the paper. Peeling too quickly may produce a filmy residue.

18) The finished appliqué will have a soft touch and matte finish. There is no need to repress the appliqué.

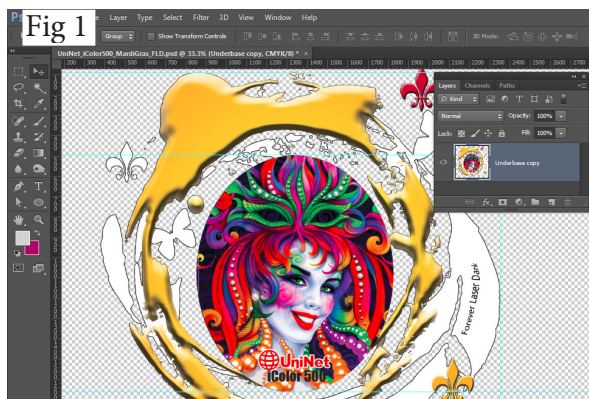


Customer Care Instructions: Wash inside-out in cold water. Do not use bleach, harsh detergents, or bleach alternatives, tumble dry on low heat. Iron inside-out. With proper application technique and care, transfers should last 100 washes.

Application Guide

Uninet Premium Two-Step Transfer Paper for Dark Apparel

One-Pass Printing instructions for use with TransferRIP



Directions

1) iColor TransferRIP software automatically adds a white under-base to your artwork, so you don't need to design your artwork in layers. Just create one image and make sure the background is transparent. TransferRIP requires a transparent background in order to determine the edges of the printed image (Fig 1).

2) **Software Settings:** Save or export your design in .PSD, PDF, or .PNG format. All of these support transparent layers and are recognized by TransferRIP.

3) Follow the instructions in the TransferRIP User's Manual to load and optimize the artwork. If you do not have a TransferRIP Manual, you may [click here](#) to download it from our Tech Support site.

4) Load Transfer paper, smooth side up, in the UniNet iColor 500 multi-purpose tray. You can load and print multiple sheets.

5) Set heat press to 240 - 280°F, 40 seconds, medium - firm pressure.

- Cover the press table with a lower platen wrap and cover that with a Teflon sheet over the press table. Or cover the table with a Teflon cover. This is very important. If the press table is not covered, too much heat will escape into the table and the coating of adhesive will not be even
- Place the transfer sheet face up on the press table and cover it with an adhesive sheet. The smooth bright side of the adhesive sheet should be face down, on contact with the printed side of the transfer sheet. **TIP!** Fold one corner of the adhesive sheet under. This will make it easier to separate them after pressing. Cover both with a sheet of copy paper.

12) Press for 40 seconds. Raise the press heat platen and immediately close it and repress for 35 seconds.

13) Raise the press - not too abruptly - and immediately remove the copy paper, grab the corner of the adhesive sheet and peel it back from the transfer sheet in one smooth motion (Fig 7). **TIP!** The transfer sheet should be kept flat on the press table to keep it from cooling. Wearing a pair of clean cotton gloves will enable you to peel more quickly.

14) Trim the edges of the Transfer sheet with scissors to remove any residue from the edges of the adhesive sheet.

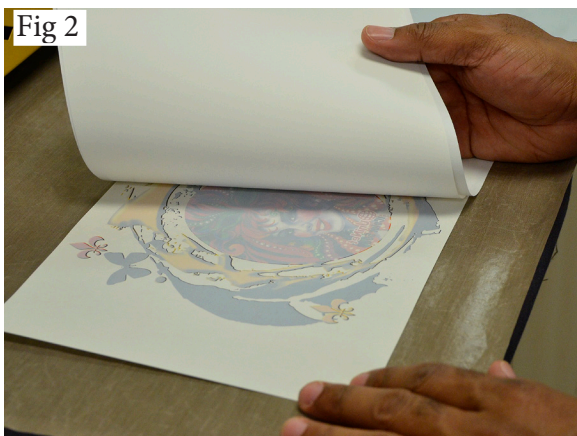
15) Place the Transfer sheet printed side down on the garment.

16) Increase the heat press pressure setting to firm and press for 35 seconds at 240 - 260°F.

17) Allow the transfer to cool to room temperature before removing the paper. Peeling too quickly may produce a filmy residue.

18) The finished appliqué will have a soft touch and matte finish. There is no need to repress the appliqué.

Fig 2



Customer Care Instructions: Please refer to page 5 for washing instructions

iColorTM 500 Application Guide

iColor Standard 2-Step and FOREVER Laser Dark (No-Cut) Low Temp

Two-Pass Printing instructions for use without TransferRIP:

For instructions for use with TransferRIP, please see page 9.

Like all self-weeding laser transfer papers for darks, Laser Dark and iColor 2-Step are two-step solutions. Both products are fully compatible with the iColor 300, 500, and 600 white toner printers.

- **Transparent Film:** The print paper (A Foil) sheet, which is a transparent film. The adhesive paper (B Paper LoTemp) adds the white adhesive layer that binds the toner to fabric. The A Foil and B Paper are sold separately. Make sure to order one pack of each.
- **Low Temp:** As the name implies, these products work at lower application temperatures than other papers. The B Paper, which applies the adhesive layer to the toner, activates at temperatures as low as 212°F (100°C). And the A Foil can be applied to apparel at temperatures as low as 275°F. This makes it a versatile solution for decorating heat-sensitive fabrics like Nylon and polyester.



Fig 1



Fig 2

Here's a summary of the two-pass printing and transfer process plus a few tips.

Print Driver Settings: The printer driver settings for Forever Laser Dark are the same as those detailed on page 4 for UniNet Premium Paper, with one exception. The Media Type should be set to Film.

Software settings: As instructed on page 4, make sure your software is in CMYK mode.

2) Place the A Foil in the Multi-Purpose Tray matte side up. You can print multiple copies from the multi-purpose tray with the iColor 500. If you are only going to print a few sheets, place a stack of paper under the sheets of Forever Laser Dark to ensure that the sheets of film are pulled straight from the tray into the printer (Fig. 1).

Tip! Mark the leading edge of the top sheet with a small arrow to ensure that you load it the same way when you print the White layer.

3) Print the CMYK layer only using the CMYK toner set.

4) Remove the Black toner cartridge and replace it with the White toner cartridge (Page 4, Fig. 3).

5) Place the printed A Foil sheets back on the Multi-Purpose Tray facing the same way, matte side up (Fig 2).

6) Select the white layer (CMYK 0/0/0/100) in your design and deselect the CMYK layer.

Ordering info

Part Number	Description	
PRNA-UN-IC2A-85X11	8.5"X 11" sheets of Transparent A-Foil,	Qty 100 Click Here to Order Online.
PRNA-UN-IC2B-85X11	8.5" X 11" sheets of B Paper Low Temp,	Qty 100 Click Here to Order Online.

Application Guide

iColor Standard 2-Step and FOREVER Laser Dark (No-Cut) Low Temp

Two-step transfer solution for Dark Apparel instructions: Cont'd

Two-Pass Printing instructions for use without TransferRIP:

For instructions for use with TransferRIP, please see page 9.

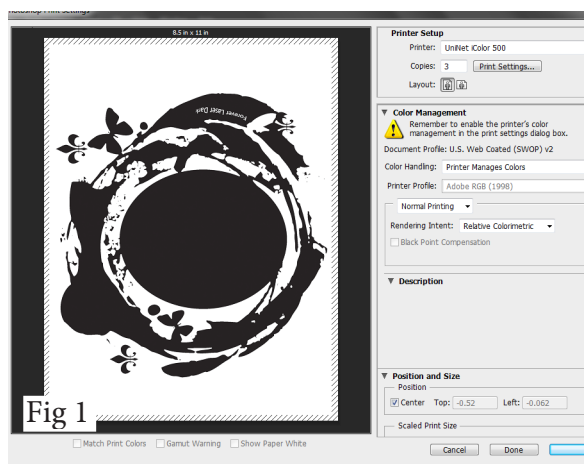


Fig 1

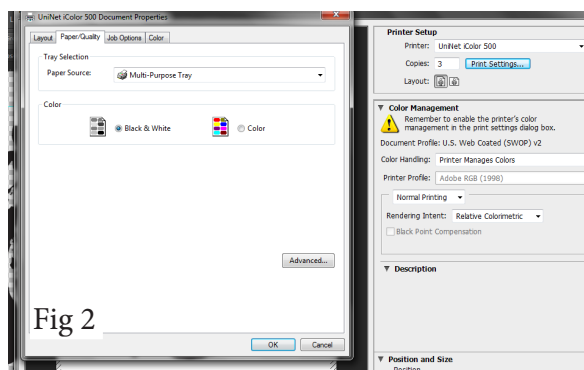


Fig 2



Fig 3

7) Open the Printer Preferences Paper/Quality Tab and change the Color setting from Color to Black & White. This will activate only the Fluorescent White toner cartridge. On this second print pass, the iColor 500 will add the white layer beneath the top CMYK layer. Because of the nature of the design, in our Mardi Gras print sample, you can clearly see the two layers and the quality of the registration (Fig. 3). It is now ready for the heat press.

8) **Pre-heat the Heat Press Table!** Forever recommends that you close the press for about two minutes to warm up the lower table. This prevents the paper and foil from cooling too quickly during separation.

9) Cover the Sheets: Before that first stage, cover the A foil and B paper with a sheet of standard copy paper. This is especially important if you use and auto-open heat press. The sheet of paper keeps the heat press from sucking the A and B sheets off the table when the platen is lifted.

10) Press the A Foil sheet and B Paper sheet together - face to face with the matte side of the film against the unprinted side of the B paper - with medium pressure for 90 - 120 seconds at 320 - 340°F

11) Rub the B Paper with a piece of cloth for five seconds. Then peel away the B Paper in one smooth motion.

12) Trim the edges of the A Foil sheet with scissors to remove any residue from the B Paper.

13) Increase pressure on your heat press to firm (about 72 psi) and position the A foil on the garment. It should be 'right reading' with the color image visible through the glossy transparency. The temperature on this stage depends on the fabric or material being decorated. See chart below.

Press for 30 seconds. **Peel cold.**

14) Cover the transfer with Forever Matte Economy Finishing Paper or Silicone Kraft paper and press with heavy pressure for 15 to 30 seconds (30 seconds on cotton, 15 on polyester). This will cure the toner on the fabric, make it more durable, and give the transfer a matte finish.

Forever Laser Dark/iColor Standard 2-Step Fabric Time & Temp Guidelines

- Cotton-Press at 285-340°F for 30 seconds at 72psi
- Polyester: Press at 265 - 285°F for 30 seconds at 72psi
- Blended Fabrics: Press at 285 -300°F for 30 seconds at paper after the first heat press cycle.

Application Guide

iColor Standard 2-Step and FOREVER Laser Dark (No-Cut) Low Temp
One-Pass Printing instructions for use with TransferRIP.

Directions



1) iColor TransferRIP software automatically adds a white under-base to your artwork, so you don't need to design your artwork in layers. Just create one image and make sure the background is transparent. TransferRIP requires a transparent background in order to determine the edges of the printed image (Fig 1).

2) **Software Settings:** Save or export your design in .PSD, PDF, or .PNG format. All of these support transparent layers and are recognized by TransferRIP.

3) Place the A Foil sheets in the Multi-Purpose tray matte side up. Print your image from TransferRIP onto the film using the Transparency media Type setting.

4) **Pre-heat the Heat Press Table!** Close the press for about two minutes to warm up the lower table. This prevents the paper and foil from cooling too quickly during separation.

5) **Cover the Sheets:** cover the A foil and B paper with a sheet of standard copy paper. The sheet of paper keeps the heat press from sucking the A and B sheets off the table when the platen is lifted.

6) Press the A Foil sheet and B Paper sheet together - face to face with the matte side of the film against the unprinted side of the B paper - with medium pressure for 90 - 120 seconds at 320 - 340°F. For a full page of 100% coverage, press for 120 seconds. For light coverage, press for 90 seconds.

11) Rub the B Paper with a piece of cloth for five seconds. Then peel away the B Paper in one smooth motion. You may need to use less effort for the last inch or two to prevent pulling toner off the A Foil.

12) Trim the edges of the A Foil sheet with scissors to remove any residue from the B Paper.

13) Increase pressure on your heat press to firm (about 72 psi) and position the A foil on the garment. It should be 'right reading' with the color image visible through the glossy transparency. The temperature on this stage depends on the fabric or material being decorated.

See chart at the bottom of page 8.

Press for 30 seconds. **Peel cold.**

14) Cover the transfer with Forever Matte Economy Finishing Paper or Silicone Kraft paper and press with heavy pressure for 15 to 30 seconds (30 seconds on cotton, 15 on polyester). This will cure the toner on the fabric, make it more durable, and give the transfer a matte finish.

For more detailed application instructions for iColor Standard 2-Step Laser Transfer paper, please **Click Here**



iColorTM 500 Application Guide

EnduraTRANS 1-Step Transfer Paper for Light Apparel & Textile Applications

EnduraTRANS 1-Step is a one step weedless transfer paper for transferring high resolution color graphics onto a variety of white and light colored fabrics. EnduraTRANS 1-Step is developed for use with UniNet iColor, GO UNO, OKI C831-TS, OKI 711WT, and OKI PRO 920WT LED laser toner printers.

EnduraTRANS 1-Step is a weedless transfer paper - all you need is one step for beautiful transfers. The laser toner is transferred to garments, leaving unprinted white area behind for vivid graphics. No need to manually weed or 'contour cut' images. EnduraTRANS 1-Step produces silk screen quality, washfast images.

Note: One-step self-weeding papers have to 'read' the difference between printed and un-printed areas of the paper. They don't do that well with pastels and light grays, so this process works best with saturated colors and gray scale values of 20% or more. For application of light gray and pastel colors on white apparel, please see page 9.



Applications

Suitable for decorating white, gray, and pastel cotton, polyester, cotton/polyester blended, and acrylic garments using a heat press and a UniNet, OKI, or GO UNO laser toner printer.

1-Step can also be used with metallic foils to create intricate, ultra high gloss metallic decorated garments without cutting or weeding.

For decorating colored or dark garments, use Forever Laser Dark or iColor Standard 2-step transfer papers.

Directions

TransferRIP note: Use the CMYK (Black) direct.image mode.

- 1) Print from the Multi-Purpose Tray using Ultra Heavy 1 Media Type Setting.
- 2) Press for 15 seconds 390° F (200° C) with medium to heavy pressure (80 - 90 psi).
- 3) Open press, wait 10-15 seconds, and peel the paper diagonally from the garment.
- 4) For increased washability and flexibility, cover with a silicone sheet and repress for 25 seconds. Wait 5 seconds, peel the silicone paper and stretch the shirt.

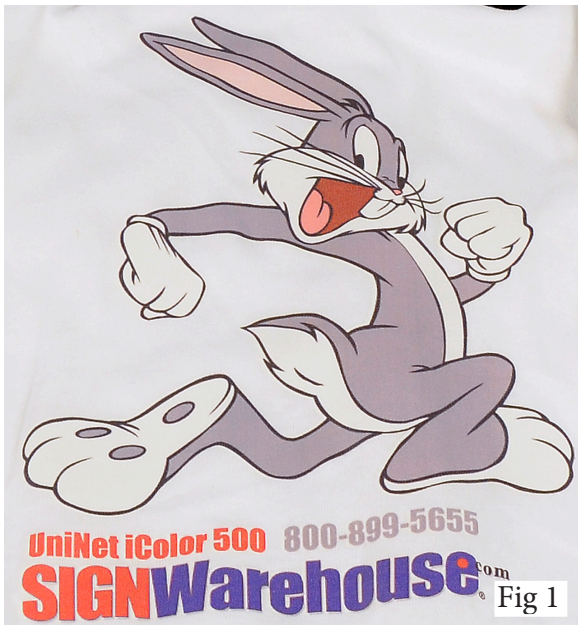
Ordering info

Part Number	Description	Part Number	Description
• PRNA-UN-ET1-LIGHT-85X17	8.5" X 17" sheets, Qty 100	• PRNA-UN-ET1-LIGHT-11X11	11" X 17" sheets, Qty 100

iColorTM 500 Application Guide

Uninet Premium Transfer Paper for Light Apparel & Textile Applications

As noted on page 8, one-step papers like EnduraTRANS FHC, Neenah Laser Light, or Forever Laser Transparent, all depend on the paper's ability to distinguish between printed and un-printed paper. Colors like pink and sky blue generally become blotchy incomplete transfers. The iColor 500 CMYK + White toner set with UniNet Premium Paper solve this problem by providing a white underbase that supports the correct transfer of these pale hues the same way it supports vivid color on dark apparel. The process for decorating white shirts, mouse pads, and other white textile items with UniNet Premium Paper is exactly the same as that used for dark garments.



Create a white underbase layer in your graphic design application and choke it by reducing the image size by 3 pixels or 0.02". Print the CMYK layer with CMYK toner, replace the Black toner cartridge and print the bottom layer using only the white toner cartridge.

TransferRIP users: create the file with a transparent background as you would a transfer for dark garments. Add the 2 device pixel choke to prevent a white halo around the CMYK toner.

Press and peel the Transfer Sheets and Adhesive sheet, Then apply the Transfer sheet to the item to be decorated.

For best results with mouse pads, use the same heat and temperature settings you would use for a cotton shirt. **Note:** When you remove the Transfer paper from the mouse pad, you may find that the paper doesn't automatically weed itself from the edge of the pad. Turn it over and trim the excess paper from the edge of the pad, or design the transfer so that it's smaller than the pad with an undecorated border outside the transfer area.



(Fig 1) The pale pink hues in Bugs Bunny's ears and tongue would not be possible with a one-step, self-weeding laser transfer paper. These colors would have transferred to the shirt in an uneven blotchy manner.

(Fig 2) Color -to-white gradients are another challenge for one-step self weeding papers. These gradients are smoothly and correctly transferred using the CMYK+White toner configuration and UniNet Premium Paper.



SIGNWarehouse®

iColor 500™ Application Guide

EnduraTRANS HS2 Transfer Paper for Non-Textile Surface Decoration

The iColor 500 can be used to decorate non-apparel items. This can be done in three ways

- 1) Use the multi-purpose tray and EnduraTrans HS2 hard surface transfer paper
- 2) Use the multi-purpose tray and UniNet Premium paper
- 3) Use the bottom tray and colored paper or card stock



Fig 1



Fig 2



Fig 3

EnduraTRANS HS2 works like EnduraTRANS 1-Step. It is a one -step self-weeding paper designed for heat transfer to hard surface non-textile items like magnetic vinyl, sealed wood and ceramic tile (Fig 1). Design graphics for EnduraTRANS HS2 using the CMYK toner cartridges only.

Change the Media Type setting to Ultra Heavy 1 and follow the time, pressure and temperature recommendations on the EnduraTRANS HS2 instruction sheet. [Click here to view it online.](#)

UniNet Premium Paper can also be used to decorate non-white substrates like coated wood (Fig 2). For these applications, use the same design and print steps you would use for dark apparel, and use the same settings for pressing and separating the Transfer and Adhesive sheets. Use the time and temperature recommendations found on the HS2 instruction sheet for final application to the substrate. For example, for decorating wood, press the Adhesive sheet to the wood for 2 minutes with firm pressure at 275° F. Allow to cool for about 90 seconds. Remove the transfer sheet and rub away any polymer residue with a soft terry cloth towel.

Colored Card Stock can be decorated using the CMYK +FW toner set in two passes, or by using only the Fluorescent White toner in one pass. The CMYK+FW process produces color on white. Print the white layer first. Then reload the paper and print the color layer (Fig 3).

For white graphics on colored paper, load the paper Tray 1 (print side down) and load the white toner cartridge. Design the graphic with a CMYK value of 0/0/0/100 and send the file. Only the Fluorescent white toner will be activated. The result is a unique decorative print suitable for retail or hobby use.

Ordering info

Part Number

PRNA-G-SWT-174-F1HS2-85X11

Description

8.5" X 11" sheets, Qty 100 [Click Here](#) to Order Online

Revised May 6, 2016